

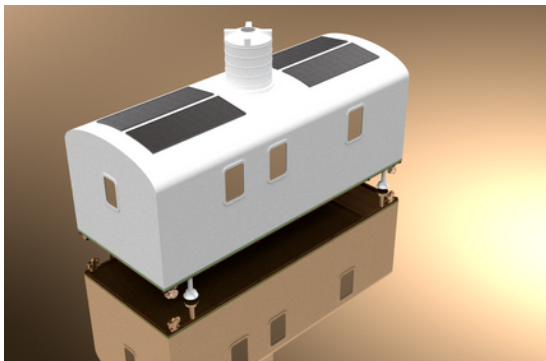
## MAIN FEATURES

- Modular insulated GRP construction
- Simple to transport
- Easy erection & storage
- Long life- almost zero maintenance
- Solar & Human Power generation
- Built in water & waste system
- Domed roof for water & snow shedding

**LifePods are a brand new modular innovation, combining lightweight & environmentally friendly GRP with a totally modular approach for all elements of the design. This results in huge versatility, and enables adaption to multiple types of habitation requirements. They are impervious to weather, long lasting (40 years) & almost zero maintenance, making these units ideal for longer term humanitarian solutions.**

**Two classes of LifePod are under development;**

## LifePod -

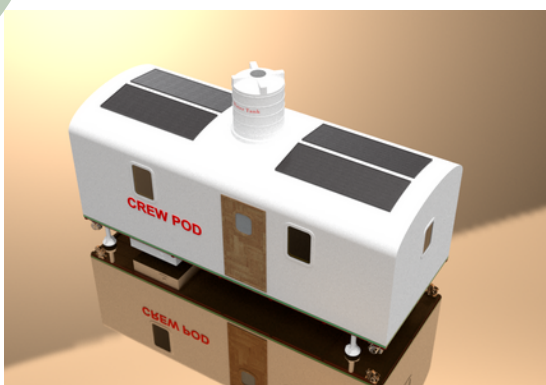


The primary reason for the HabiPod concept, LifePods are designed to provide emergency shelter with basic amenities, in a complete unit that can be mass produced at low cost & easily transported & installed using simple tools & labour.

### **USE:**

**Disaster Relief - for natural crises such as the recent earthquake in Turkey/Syria**  
**Refugee/Migrant Camps - for those displaced & made homeless by political crises & war**

## CrewPod -



Accommodation for workers on large projects is always hard to find. CrewPods can be transported to site, and assembled within hours into good standard, comfortable rooms for workers. Each Pod has "stand-alone" facilities such as power/water/light & waste management

### **USE:**

**Major Construction Projects - Large numbers of CrewPods can be simply linked together for full facilities management**

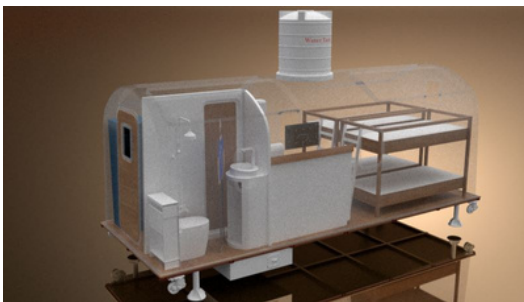
*Shelter with dignity*

# LifePod - Specification



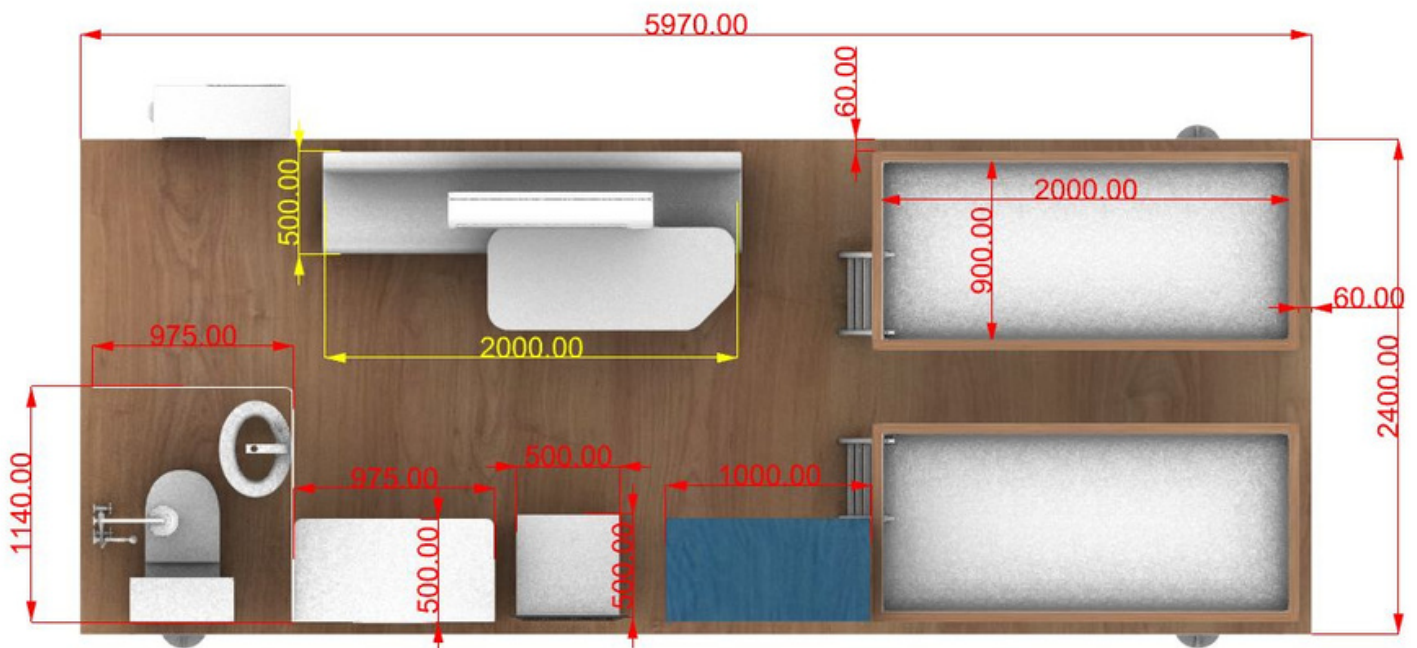
## DIMENSIONS

|                  |                      |
|------------------|----------------------|
| Length           | : 5.97m              |
| Width            | : 2.4m               |
| Height (unit)    | : 2.2m               |
| with water tank) | : 3.2m               |
| Weight           | : 550Kg              |
| Internal area    | : 11.6m <sup>2</sup> |
| Internal volume  | : 30 m <sup>3</sup>  |



## OPTIONS

- Bare unit for client fitout
- Built in Pullman emergency sleeping racks
- Wet room with chemical toilet
- Solar lighting & built in battery storage
- Basic Heating & cooking facility





# CrewPod - Specification

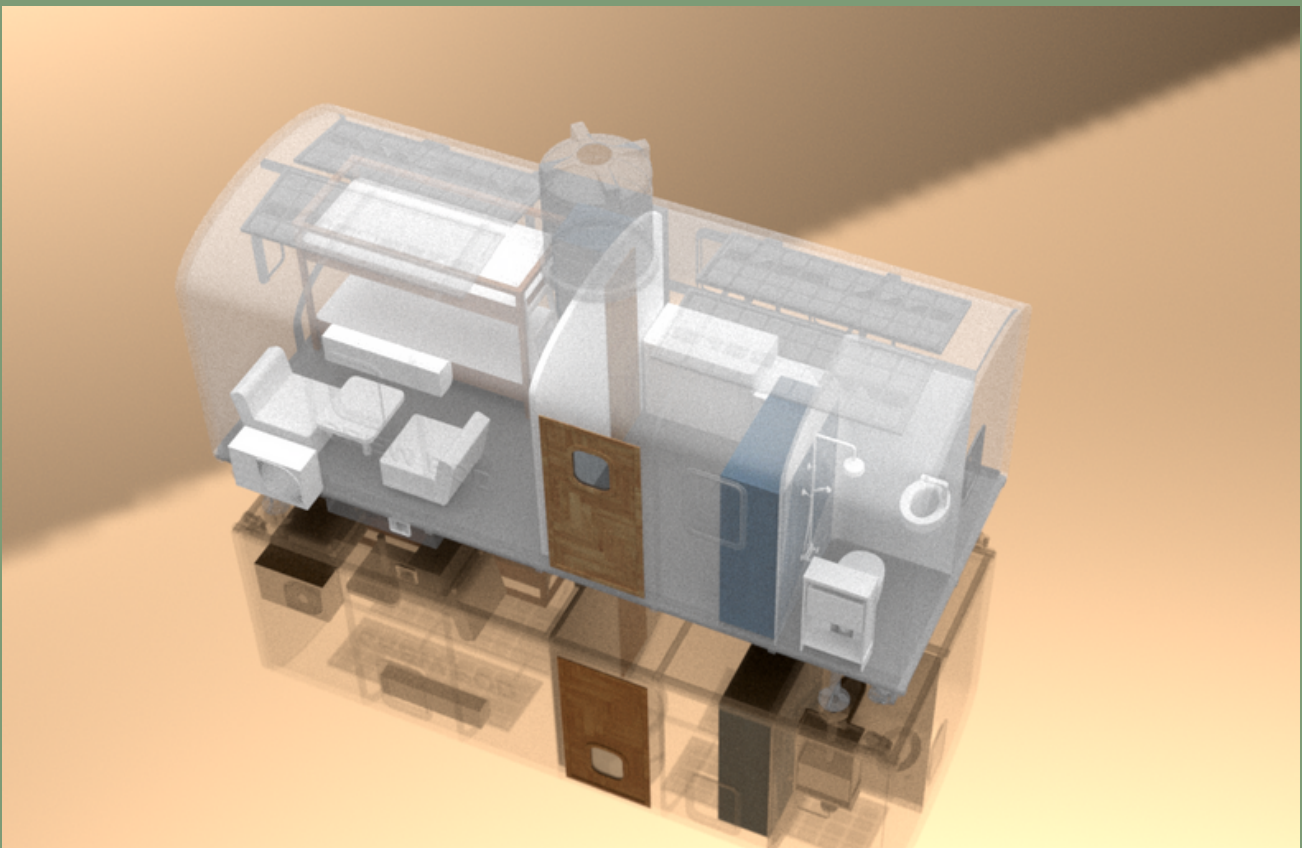


Standard unit is as "LifePod", however both Pod types can be scaled up as needed, and other Pods directly connected via link modules. Multiple CrewPods can be simply connected to a camp water & power network

## OPTIONS



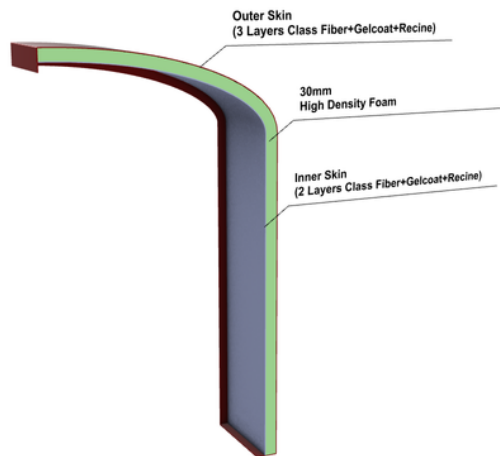
Pullman bed with integral seating, or fitted bunks/ seating with dining table/ storage cupboards  
Wet room with chemical toilet  
Solar lighting & built in battery storage  
- additional fold-out solar panels  
Aircon prepared  
Basic Heating



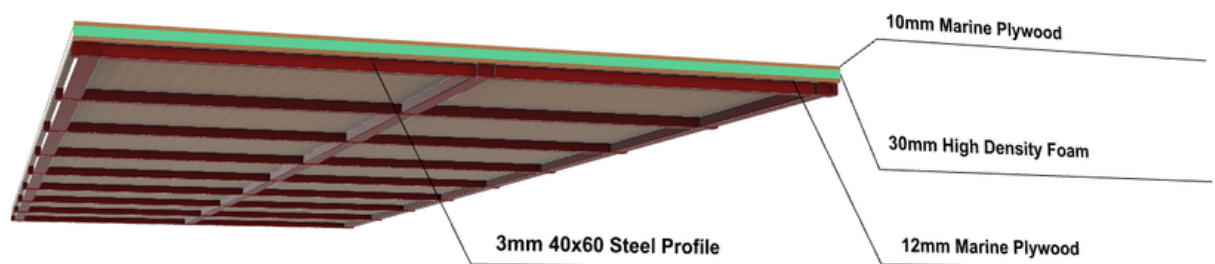
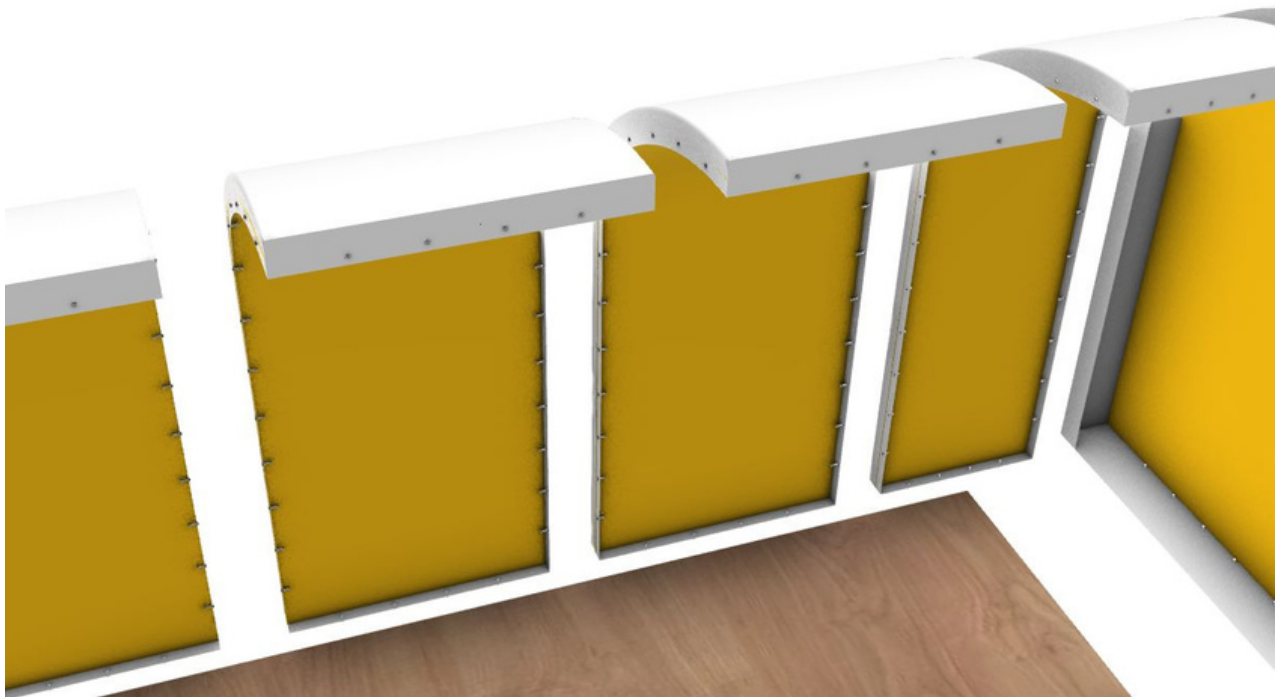
*Shelter with dignity*

# Pod - Construction

75% lighter than  
conventional steel units  
(550kg v 2,250kg)

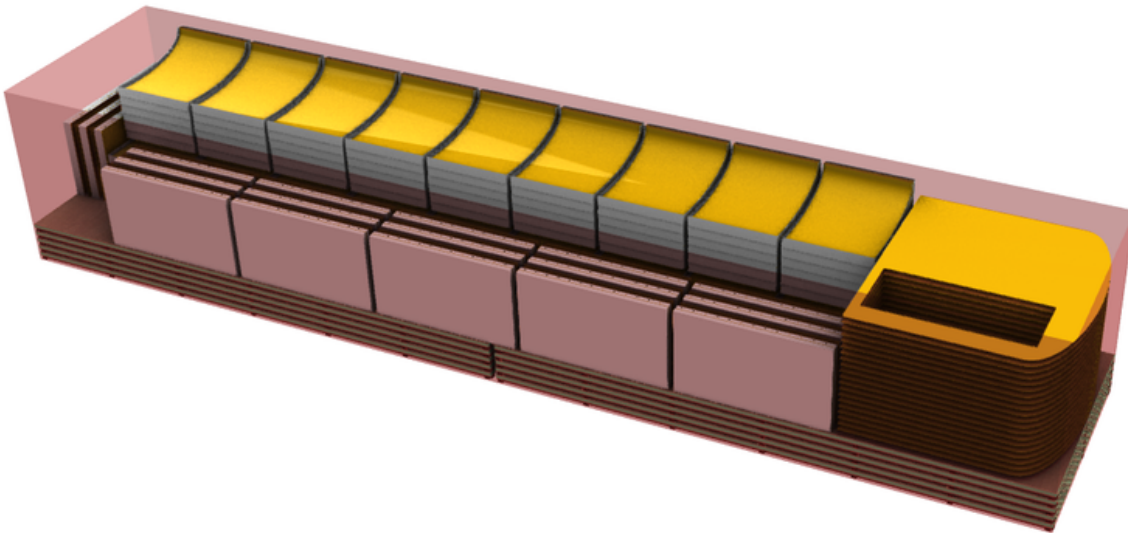


All Pods are constructed from GRP 1m wide "sandwich" insulated modules which provides strength to the roof & sides simultaneously, and provides roof "run-off". Each modules bolts to its neighbour, allowing easy scaling to increase sizes

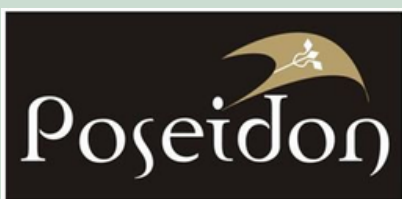


# Pod - Transport

10 Standard LifePods can fit inside a 40ft container and be simply assembled within hours on site, giving this new concept a significant advantage over pre-built modules (2 per 40ft truck), and prefabricated conventional sections (which are more difficult to assemble & make weatherproof)



## HabiPod - Concept, Design & Production



Poseidon Engineering,  
Izmir,  
Turkey

<https://poseidonltd.com/>

## HabiPod - Commercial Development, Marketing



Harmony Marine Shipbrokers,  
Mellieha,  
Malta

Contact : [info@hmsbroker.com](mailto:info@hmsbroker.com)

*Shelter with dignity*